

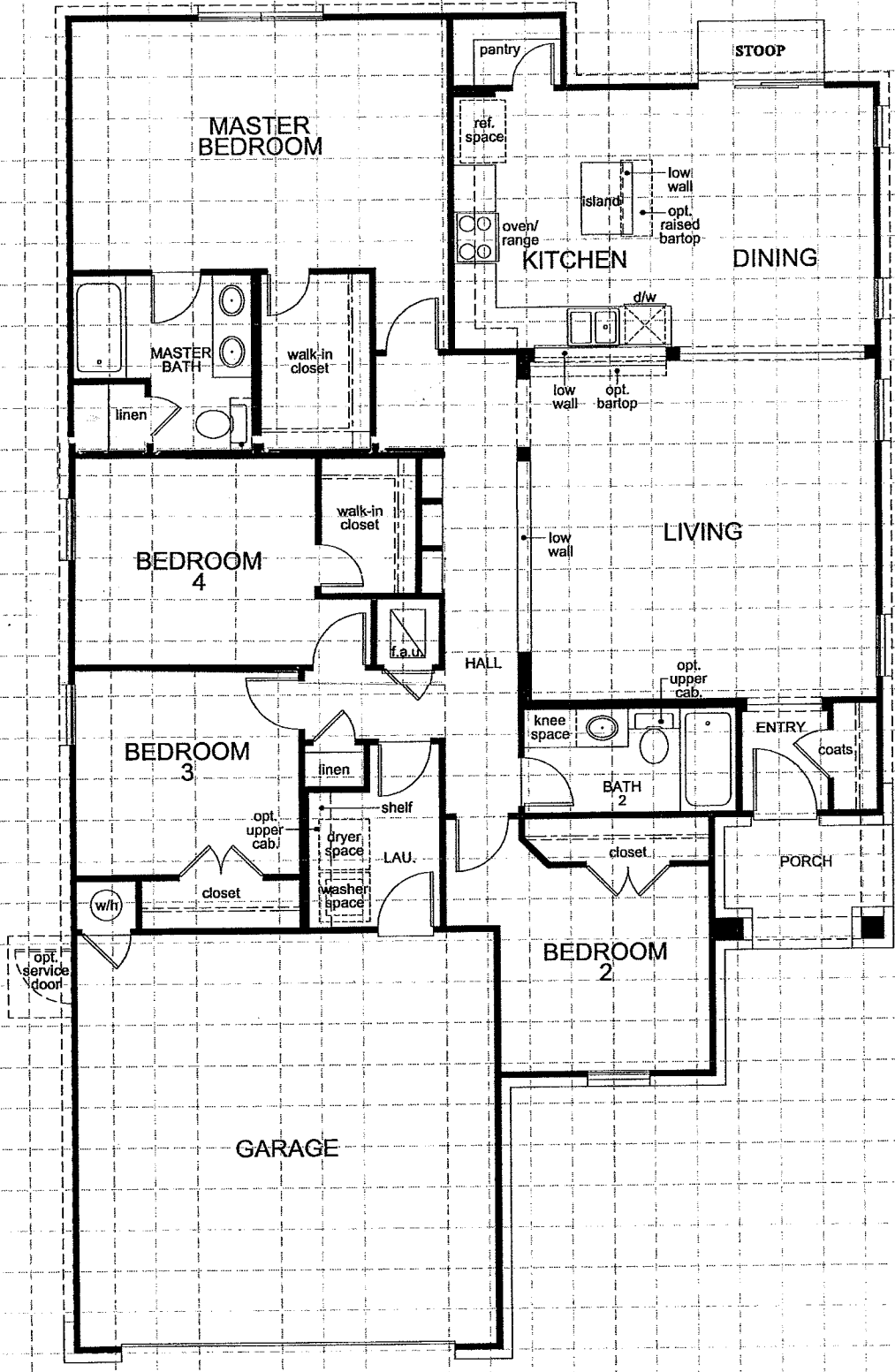
Buyer Signature
 * Reported square footage is approximate and based upon architectural design; area may vary according to construction. Drawing not to scale. U.S.A. Plans and specifications may change without notice, and may vary by neighborhood. All units and area commander for current plan. (Printed in the USA.)

Date

Instructions:
 1. Use the following codes when identifying location.
 2. Use very specific with locations.
 3. Include master entry, if necessary, otherwise exact location will be determined by builder.

Codes

- L = Light
- SO = Switch
- 7 = Telephone
- HT = Hose Bib
- CT = Cable T.V.
- DO = Dedicated Outlet
- W = Water
- IN = Intercom
- FB = Fan Box and Block
- FL = Flood Light
- SM = Speaker Main
- AK = Additional Key Pad
- MS = Motion Sensor
- WS = Water Softener
- GF = Ground Fault Interrupter
- SS = Stereo Speakers
- SD = Stereo Speakers Detector



AUSTIN:
KB HOME
40' A SERIES

Note: The grid is intended to be used as a visual aid to the approximate location of buyer options.

PLAN No. : A 139.1710
JOB No. : 868999:30
DATE : 10/10/08
STORIES : 1-STORY
SCALE : 1/8"=1'-0"

These designs and drawings are CONFIDENTIAL and the exclusive property of KB Home Corporation and are not to be disclosed without the express permission of KB Home Corporation. They may not be used or duplicated without the express permission of KB Home Corporation. Copyright 2008 © KB Home Corporation. All rights reserved.